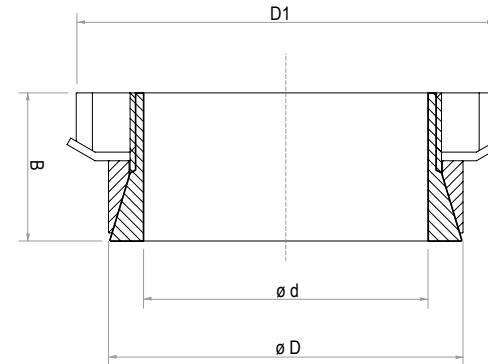


Spannsätze SPS 17

Nicht selbstzentrierend

Empfohlene Bearbeitungstoleranzen:

Welle h8 Nabe H8



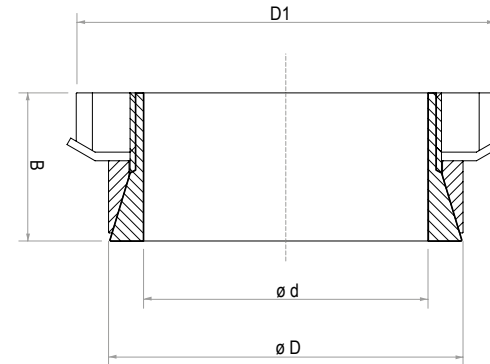
Artikel		Abmessungen			Drehmoment	Axialkraft	Flächenpressung		Nutmutter DIN 912		Masse
Nr.	Kurzbez.	B (mm)	L ₁ (mm)	D ₁ (mm)	M _t (Nm)	F _a (kN)	Welle p _w (N/mm ²)	Nabe p _n (N/mm ²)	Typ	Anzugsmoment M _s (Nm)	m (kg)
129552	SPS 17 - 14 x 25	16,5	6,5	32,0	38	5,0	200	110	KM4	95	0,050
129553	SPS 17 - 15 x 25	16,5	6,5	32,0	41	5,0	185	110	KM4	95	0,050
129554	SPS 17 - 16 x 25	16,5	6,5	32,0	43	5,0	174	110	KM4	95	0,040
129555	SPS 17 - 17 x 30	18,0	6,5	38,0	55	6,0	197	112	KM5	160	0,080
129556	SPS 17 - 18 x 30	18,0	6,5	38,0	58	6,0	186	112	KM5	160	0,080
129557	SPS 17 - 19 x 30	18,0	6,5	38,0	62	7,0	176	112	KM5	160	0,080
129558	SPS 17 - 20 x 30	18,0	6,5	38,0	66	7,0	167	111	KM5	160	0,070
129559	SPS 17 - 22 x 35	18,0	6,5	45,0	96	8,0	202	127	KM6	220	0,100
129560	SPS 17 - 24 x 35	18,0	6,5	45,0	105	9,0	185	127	KM6	220	0,090
129561	SPS 17 - 25 x 35	18,0	6,5	45,0	110	9,0	178	127	KM6	220	0,090
129562	SPS 17 - 28 x 40	19,5	7,0	52,0	150	10,0	176	123	KM7	340	0,070
129563	SPS 17 - 30 x 40	19,5	7,0	52,0	160	11,0	164	123	KM7	340	0,070
129564	SPS 17 - 32 x 45	21,5	8,0	58,0	210	12,0	167	120	KM8	480	0,180
129565	SPS 17 - 35 x 45	21,5	8,0	58,0	230	13,0	153	120	KM8	480	0,170
129566	SPS 17 - 36 x 45	21,5	8,0	58,0	240	13,0	149	120	KM8	480	0,150
129567	SPS 17 - 38 x 52	24,5	10,0	65,0	290	14,0	126	93	KM9	680	0,250
129568	SPS 17 - 40 x 52	24,5	10,0	65,0	310	15,0	120	93	KM9	680	0,240

Spannsätze SPS 17

Nicht selbstzentrierend

Empfohlene Bearbeitungstoleranzen:

Welle h8 Nabe H8



Artikel		Abmessungen			Drehmoment	Axialkraft	Flächenpressung		Nutmutter DIN 912		Masse
Nr.	Kurzbez.	B (mm)	L ₁ (mm)	D ₁ (mm)	M _t (Nm)	F _a (kN)	Welle p _w (N/mm ²)	Nabe p _n (N/mm ²)	Typ	Anzugsmoment M _s (Nm)	m (kg)
129569	SPS 17 - 42 x 57	25,5	10,0	70,0	370	17,0	131	96	KM10	870	0,300
129570	SPS 17 - 45 x 57	25,5	10,0	70,0	400	18,0	122	96	KM10	870	0,280
129571	SPS 17 - 48 x 62	25,5	10,0	75,0	500	21,0	135	105	KM11	970	0,320
129572	SPS 17 - 50 x 62	25,5	10,0	75,0	520	21,0	130	105	KM11	970	0,300
129573	SPS 17 - 55 x 68	27,5	12,0	80,0	610	22,0	103	84	KM12	1.100	0,360
129574	SPS 17 - 56 x 68	27,5	12,0	80,0	620	22,0	101	82	KM12	1.100	0,340
129575	SPS 17 - 60 x 73	28,5	12,0	85,0	800	27,0	113	93	KM13	1.300	0,400
129576	SPS 17 - 63 x 79	30,5	14,0	92,0	980	31,0	107	86	KM14	1.600	0,560
129577	SPS 17 - 65 x 79	30,5	14,0	92,0	1.010	31,0	104	86	KM14	1.600	0,520
129578	SPS 17 - 70 x 84	31,5	14,0	98,0	1.240	35,0	110	92	KM15	2.000	0,600