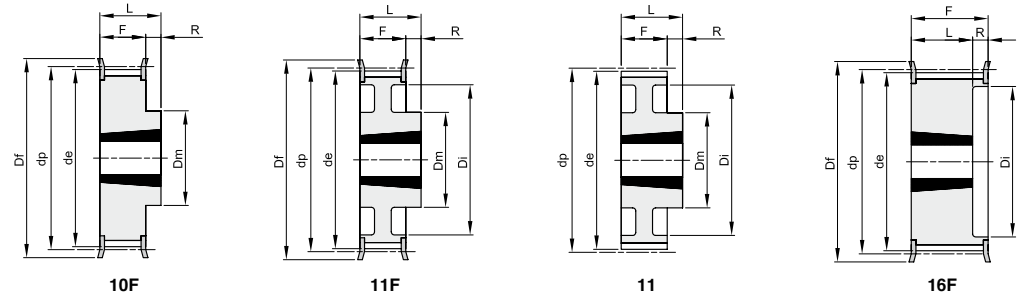


Zahnriemenscheiben für Taperbuchsen

HTD 8M

Teilung 8 mm

für Zahnriemenbreite 20 mm



Nr.	Kurzbez.	Zähne	Ausführung	Material*	Spannbuchse	Bohrung max (mm)	d _p (mm)	d _e (mm)	D _f (mm)	D _m (mm)	D _i (mm)	F (mm)	L (mm)	R (mm)	Bordscheiben Nr.	Masse (kg)
127293	TL 22 8M 20	22	16F	ST	1008	25	56,02	54,65	60,0		37,0	28,0	22,0	6	308	0,250
127294	TL 24 8M 20	24	16F	ST	1108	25	61,11	59,74	66,0		44,0	28,0	22,0	6	310	0,300
127295	TL 26 8M 20	26	16F	ST	1108	25	66,21	64,84	71,0		45,0	28,0	22,0	6	311	0,360
127296	TL 28 8M 20	28	16F	ST	1108	25	71,30	70,08	75,0		50,0	28,0	22,0	6	312	0,450
127297	TL 30 8M 20	30	16F	ST	1108	25	76,39	75,13	83,0		58,0	28,0	22,0	6	314	0,550
127298	TL 32 8M 20	32	16F	ST	1610	42	81,49	80,16	87,0		63,0	28,0	25,0	3	315	0,430
127299	TL 34 8M 20	34	16F	ST	1610	42	86,58	85,21	91,0		64,0	28,0	25,0	3	316	0,570
127300	TL 36 8M 20	36	16F	ST	1610	42	91,67	90,30	98,0		68,0	28,0	25,0	3	319	0,700
127301	TL 38 8M 20	38	16F	ST	1610	42	96,77	95,39	103,0		72,0	28,0	25,0	3	320	0,820
127302	TL 40 8M 20	40	16F	ST	1610	42	101,86	100,49	106,0		76,0	28,0	25,0	3	321	1,100
127303	TL 44 8M 20	44	10F	ST	2012	50	112,05	110,67	119,0	92,0		28,0	32,0	4	325	1,200
127304	TL 48 8M 20	48	10F	ST	2012	50	122,23	120,86	127,0	96,0		28,0	32,0	4	327	1,650
127305	TL 56 8M 20	56	10F	ST	2012	50	142,60	141,23	148,0	110,0		28,0	32,0	4	333	2,500
127306	TL 64 8M 20	64	11F	ST	2012	50	162,97	161,60	168,0	110,0	137,0	28,0	32,0	4	338	2,600
127307	TL 72 8M 20	72	11F	ST	2012	50	183,35	181,97	192,0	110,0	158,0	28,0	32,0	4	340	3,400
127308	TL 80 8M 20	80	11	GG	2012	50	203,72	202,35		110,0	180,0	28,0	32,0	4		3,600
127309	TL 90 8M 20	90	11	GG	2012	50	229,18	227,81		110,0	204,0	28,0	32,0	4		4,100

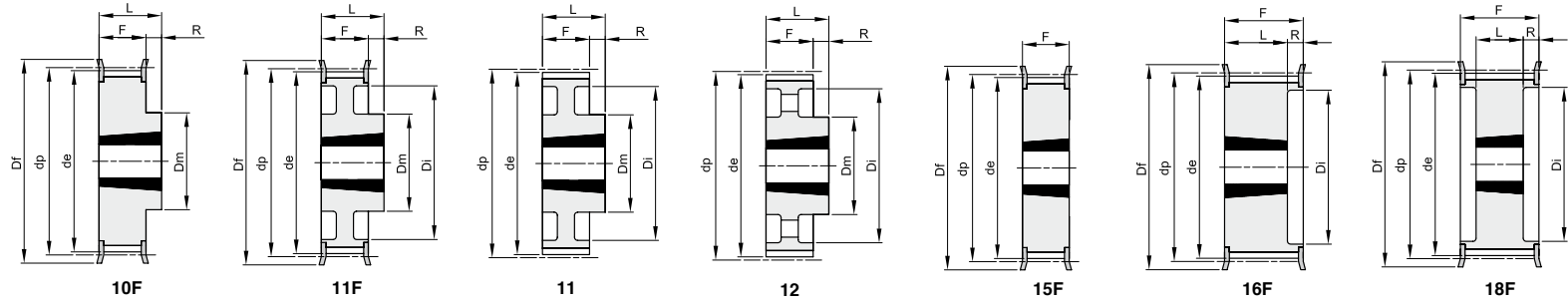
* ST = Stahl / GG = Grauguss

Zahnriemenscheiben für Taperbuchsen

HTD 8M

Teilung 8 mm

für Zahnriemenbreite 30 mm



Nr.	Kurzbez.	Zähne	Ausführung	Material*	Spannbuchse	Bohrung max (mm)	d_p (mm)	d_e (mm)	D_f (mm)	D_m (mm)	D_i (mm)	F (mm)	L (mm)	R (mm)	Bordscheiben Nr.	Masse (kg)
127310	TL 22 8M 30	22	16F	ST	1008	25	56,02	54,65	60,0		37,0	38,0	22,0	16	308	0,330
127311	TL 24 8M 30	24	16F	ST	1108	25	61,11	59,74	66,0		44,0	38,0	22,0	16	310	0,400
127312	TL 26 8M 30	26	16F	ST	1108	25	66,21	64,84	71,0		44,0	38,0	22,0	16	311	0,450
127313	TL 28 8M 30	28	16F	ST	1210	32	71,30	70,08	75,0		50,0	38,0	25,0	13	312	0,500
127314	TL 30 8M 30	30	15F	ST	1615	42	76,39	75,13	83,0			38,0	38,0		314	0,550
127315	TL 32 8M 30	32	15F	ST	1615	42	81,49	80,16	87,0			38,0	38,0		315	0,600
127316	TL 34 8M 30	34	15F	ST	1615	42	86,58	85,21	91,0			38,0	38,0		316	0,800
127317	TL 36 8M 30	36	15F	ST	1615	42	91,67	90,30	98,0			38,0	38,0		319	1,000
127318	TL 38 8M 30	38	15F	ST	1615	42	96,77	95,39	103,0			38,0	38,0		320	1,100
127319	TL 40 8M 30	40	15F	ST	1615	42	101,86	100,49	106,0			38,0	38,0		321	1,340
127320	TL 44 8M 30	44	18F	ST	2012	50	112,05	110,67	119,0		86,0	38,0	32,0	3	325	1,300
127321	TL 48 8M 30	48	18F	ST	2012	50	122,23	120,86	127,0		90,0	38,0	32,0	3	327	1,800
127322	TL 56 8M 30	56	18F	ST	2012	50	142,60	141,23	148,0		110,0	38,0	32,0	3	333	3,800
127323	TL 64 8M 30	64	10F	ST	2517	60	162,97	161,60	168,0	125,0		38,0	45,0	7	338	4,300
127324	TL 72 8M 30	72	11F	ST	2517	60	183,35	181,97	192,0	125,0	158,0	38,0	45,0	7	340	4,400
127325	TL 80 8M 30	80	11	GG	2517	60	203,72	202,35		125,0	180,0	38,0	45,0	7		4,650

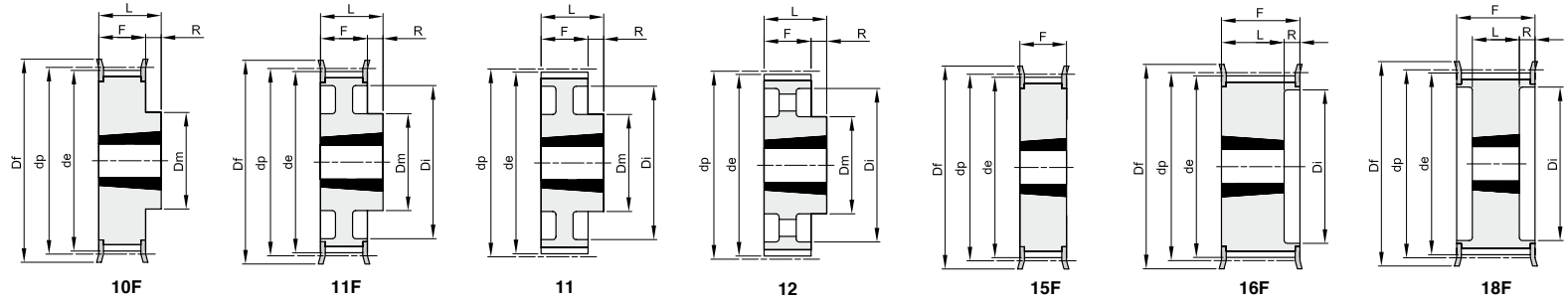
* ST = Stahl / GG = Grauguss

Zahnriemenscheiben für Taperbuchsen

HTD 8M

Teilung 8 mm

für Zahnriemenbreite 30 mm



Nr.	Kurzbez.	Zähne	Ausführung	Material*	Spannbuchse	Bohrung max (mm)	d_p (mm)	d_e (mm)	D_f (mm)	D_m (mm)	D_i (mm)	F (mm)	L (mm)	R (mm)	Bordscheiben Nr.	Masse (kg)
127326	TL 90 8M 30	90	11	GG	2517	60	229,18	227,81		125,0	204,0	38,0	45,0	7		5,800
127327	TL 112 8M 30	112	12	GG	2517	60	285,21	283,83		125,0	254,0	38,0	45,0	7		6,200
127328	TL 144 8M 30	144	12	GG	2517	60	366,69	365,32		125,0	336,0	38,0	45,0	7		9,000

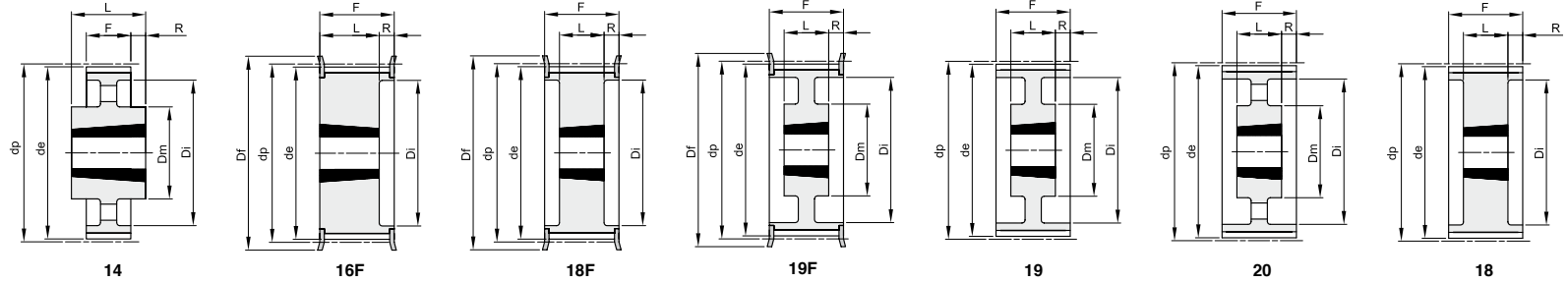
* ST = Stahl / GG = Grauguss

Zahnriemenscheiben für Taperbuchsen

HTD 8M

Teilung 8 mm

für Zahnriemenbreite 50 mm



Nr.	Kurzbez.	Zähne	Ausführung	Material*	Spannbuchse	Bohrung max (mm)	d_p (mm)	d_e (mm)	D_f (mm)	D_m (mm)	D_i (mm)	F (mm)	L (mm)	R (mm)	Bordscheiben Nr.	Masse (kg)
127329	TL 28 8M 50	28	16F	ST	1210	32	71,30	70,08	75,0		50,0	60,0	25,0	35	312	0,600
127330	TL 30 8M 50	30	16F	ST	1615	42	76,39	75,13	83,0		58,0	60,0	38,0	22	314	0,650
127331	TL 32 8M 50	32	16F	ST	1615	42	81,49	80,16	87,0		63,0	60,0	38,0	22	315	0,800
127332	TL 34 8M 50	34	16F	ST	1615	42	86,58	85,21	91,0		65,0	60,0	38,0	22	316	1,080
127333	TL 36 8M 50	36	16F	ST	1615	42	91,67	90,30	98,0		68,0	60,0	38,0	22	319	1,350
127334	TL 38 8M 50	38	16F	ST	1615	42	96,77	95,39	103,0		72,0	60,0	38,0	22	320	1,650
127335	TL 40 8M 50	40	18F	ST	2012	50	101,86	100,49	106,0		80,0	60,0	32,0	14	321	1,700
127336	TL 44 8M 50	44	18F	ST	2012	50	112,05	110,67	119,0		86,0	60,0	32,0	14	325	1,800
127337	TL 48 8M 50	48	18F	ST	2012	50	122,23	120,86	127,0		95,0	60,0	32,0	14	327	2,350
127338	TL 56 8M 50	56	18F	ST	2517	60	142,60	141,23	148,0		116,0	60,0	45,0	8	333	3,350
127339	TL 64 8M 50	64	18F	ST	2517	60	162,97	161,60	168,0		136,0	60,0	45,0	8	338	4,900
127340	TL 72 8M 50	72	19F	ST	2517	60	183,35	181,97	192,0	125,0	158,0	60,0	45,0	8	340	6,900
127341	TL 80 8M 50	80	18	GG	3020	75	203,72	202,35			180,0	60,0	51,0	5		8,900
127342	TL 90 8M 50	90	19	GG	3020	75	229,18	227,81		160,0	204,0	60,0	51,0	5		9,900
127343	TL 112 8M 50	112	19	GG	3020	75	285,21	283,83		170,0	254,0	60,0	51,0	5		12,100
127344	TL 144 8M 50	144	20	GG	3020	75	366,69	365,32		170,0	336,0	60,0	51,0	5		15,400
127345	TL 168 8M 50	168	14	GG	3525	90	427,81	426,44		198,0	395,0	60,0	65,0	3		22,800
127346	TL 192 8M 50	192	14	GG	3525	90	488,92	487,55		198,0	455,0	60,0	65,0	3		26,500

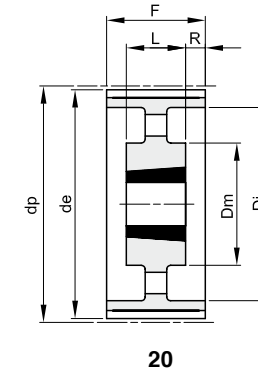
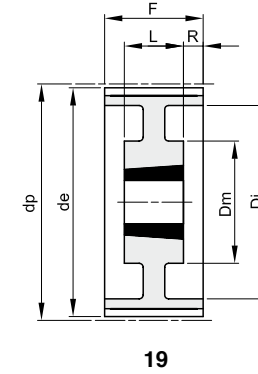
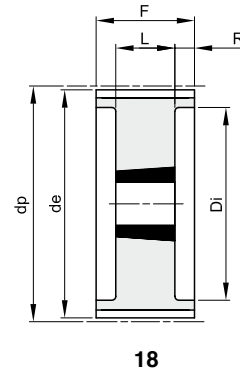
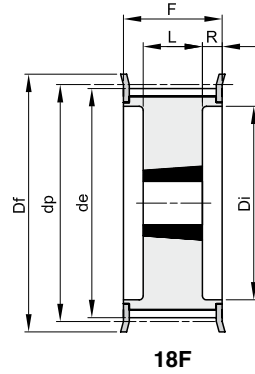
* ST = Stahl / GG = Grauguss

Zahnriemenscheiben für Taperbuchsen

HTD 8M

Teilung 8 mm

für Zahnriemenbreite 85 mm



Nr.	Kurzbez.	Zähne	Ausführung	Material*	Spannbuchse	Bohrung max (mm)	d_p (mm)	d_e (mm)	D_f (mm)	D_m (mm)	D_i (mm)	F (mm)	L (mm)	R (mm)	Bordscheiben Nr.	Masse (kg)
127347	TL 34 8M 85	34	18F	ST	1615	42	86,58	85,22	91,0		65,0	95,0	38,0	29	316	1,500
127348	TL 36 8M 85	36	18F	ST	1615	42	91,67	90,30	98,0		68,0	95,0	38,0	29	319	1,900
127349	TL 38 8M 85	38	18F	ST	1615	42	96,77	95,39	103,0		72,0	95,0	38,0	29	320	2,200
127350	TL 40 8M 85	40	18F	ST	2012	50	101,86	100,49	106,0		80,0	95,0	32,0	32	321	1,900
127351	TL 44 8M 85	44	18F	ST	2012	50	112,05	110,67	119,0		86,0	95,0	32,0	32	325	2,300
127352	TL 48 8M 85	48	18F	ST	2517	60	122,23	120,86	127,0		97,0	95,0	45,0	25	327	2,700
127353	TL 56 8M 85	56	18F	ST	2517	60	142,60	141,23	148,0		116,0	95,0	45,0	25	333	4,500
127354	TL 64 8M 85	64	18F	ST	2517	60	162,97	161,60	168,0		136,0	95,0	45,0	25	338	6,300
127355	TL 72 8M 85	72	18F	ST	3020	75	183,35	181,97	192,0		150,0	95,0	51,0	22	340	8,100
127356	TL 80 8M 85	80	18	GG	3020	75	203,72	202,35			180,0	95,0	51,0	22		10,200
127357	TL 90 8M 85	90	19	GG	3020	75	229,18	227,81		170,0	204,0	95,0	51,0	22		11,200
127358	TL 112 8M 85	112	19	GG	3020	75	285,21	283,83		170,0	254,0	95,0	51,0	22		15,000
127359	TL 144 8M 85	144	20	GG	3525	90	366,69	365,32		198,0	336,0	95,0	65,0	15		20,200
127360	TL 168 8M 85	168	20	GG	3525	90	427,81	426,44		198,0	395,0	95,0	65,0	15		22,400
127361	TL 192 8M 85	192	20	GG	3525	90	488,92	487,55		198,0	455,0	95,0	65,0	15		28,200

* ST = Stahl / GG = Grauguss